

TCAD for VCL

Train Course for developers



Created by fei hongbin

Plan

- Chapter 1 Overview (day1)
 - Chapter 2 Feature of TCAD (day1)
 - Chapter 3 Basic property (day2)
 - Chapter 4 Advance property (day2)
 - Chapter 5 Mouse Drawing and Code Drawing (day3)
 - Chapter 5 Library creating and using (day3)
 - Chapter 6 Events inside TCAD (day4)
 - Chapter 7 Layer Operation (day4)
 - Chapter 8 Save and Load the drawing (day5)
 - Chapter 9 Q&A (day5)
-

Chapter 1 Overview

- Introduction of TCAD for VCL
 - Who can use TCAD component?
 - Which develop tool(s) can intergate TCAD?
 - How to install TCAD under Delphi tools
 - Install TCAD on your PC
 - Review the icons of TCAD on the components panel
 - Create the first simple application with TCAD (demo)
-

1.1 What is TCAD

- TCAD is a component that will help you write vector graphics applications. Shapes can be interacted with by mouse or code. support dynamic link line ,It is easy to use, effective and powerful. It will save you valuable time.
 - Review applications that based on TCAD
<http://www.codeidea.com/products/tcad-for-vcl.html>
-

1.2 Who are using TCAD

- Delphi & C++ Builder Developers can use TCAD for VCL
 - C# developers can use TCAD for .NET
 - <http://www.codeidea.com/testimonials.html>
-

[Home](#) | Testimonials

We use TCAD to create Sota Planning Tool , it is designed that the cleaning contractors quickly and reliably to detect and calculate the time and cost of cleaning, for potential or existing customers, presented in a professional and competitive way.

2015-11-01



Harald Habberstad
Norway

We develop laser marking systems. Graphic user interface with CAD functionality for this kind of application is one of the most critical elements of the system. TCAD component is the main part of our software. We use it in our development for about five years and found TCAD the most useful software package to add CAD functionality. It saved us a lot of time and helped to build successful product.

2013-06-13

Yevgeniy Kuklin
USA

I create a Windows Maker base on TCAD, it is easy to write software and really save my time.

Another software: **Firefighters** to make their fighting plans and practices. This application is based on Your TCAD VCL library as well. I used formerly prepared TCAD files as templates, by this way users have a guideline to make professional drawings.



Jozsef
Hungary

I spent a long time looking for a suitable application for Inking with a small Tablet convertible running XP. I finally found FreeDesktop from www.codeidea.com. This is an excellent simple tool, but was not at that time entirely correct for the purpose that I had in mind. I contacted Hongbin Fei, who was exceptionally helpful and friendly, and who tailored the application to exactly the parameters that I needed.



Clients around world

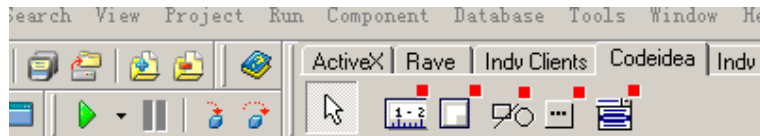
- SMC Japan
- Incom I&C Co., LTD
- Microdata Tecnologia Ltda. Brazil
- Hansestadt Investments South Africa
- Ravenscroft Services Ltd. United Kingdom
- Sinter & Net S.p.A. Italy
- BeCom Service Germany
- Spider industrier a.s Norway
- HERMESTI INGENIERIA DOCUMENTAL S.L. Spain
- ABC TV Australia
- BeCom Service Germany
- E+Manufacturing Belgium
- Enprise Solutions Limited New Zealand
- University of Groningen Netherlands
- Medisys Innovation Singapore
- LAUWERS TD BV Netherlands

1.3 Easy installation

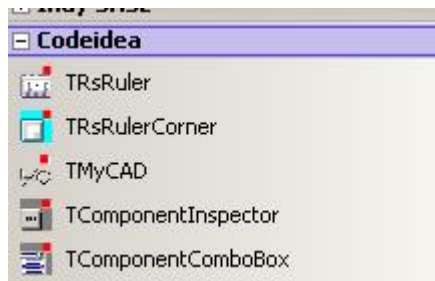
- Install TCAD component (view demo)

1.4 Icon review of TCAD component

■ Delphi 5-7



■ XE or later



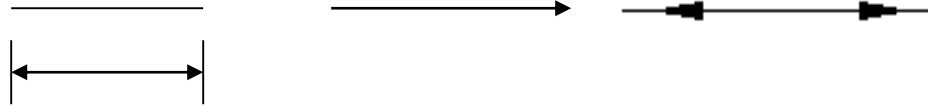
1.5 Create to first application

- Hello world!
(view the demo)

Chapter 2 Feature of TCAD

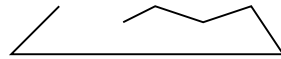
Support Shapes 1/2

■ Line



■ RuleLine

■ Polyline



■ Polygon



■ PolyBezier



■ Rectangle



■ Arc



■ Ellipse



Chapter 2 Feature of TCAD

Support Shapes 2/2

- Text MyText
- Bitmap

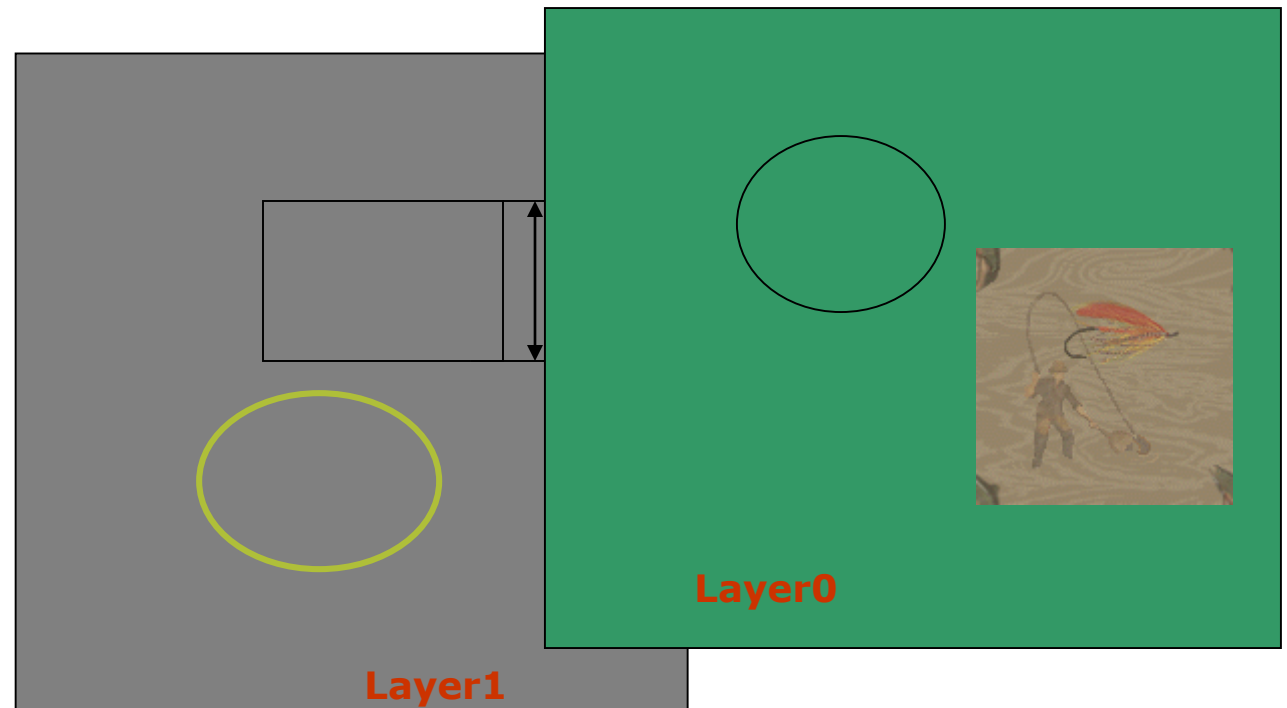


- and combined shape (Userdefined Shape)



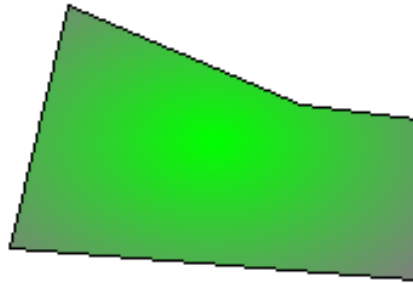
Chapter 2 Feature of TCAD

Support Multi-Layers



Chapter 2 Feature of TCAD

Support 24 gradient styles color to fill shape



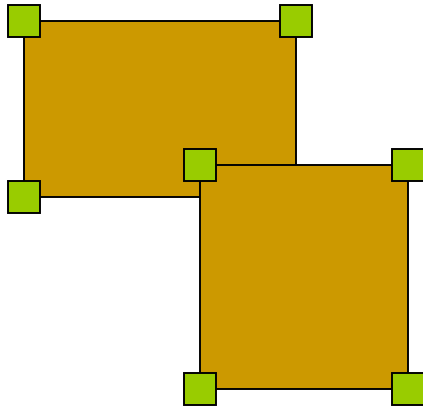
Support many font styles

TCAD xp

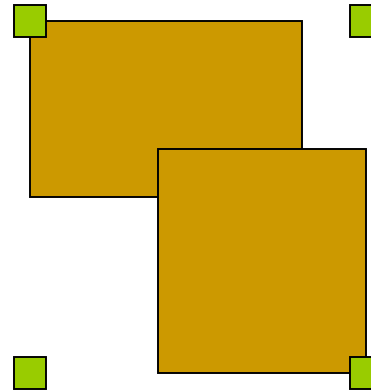
TCAD xp

TCAD xp

Grouping/Ungrouping shapes



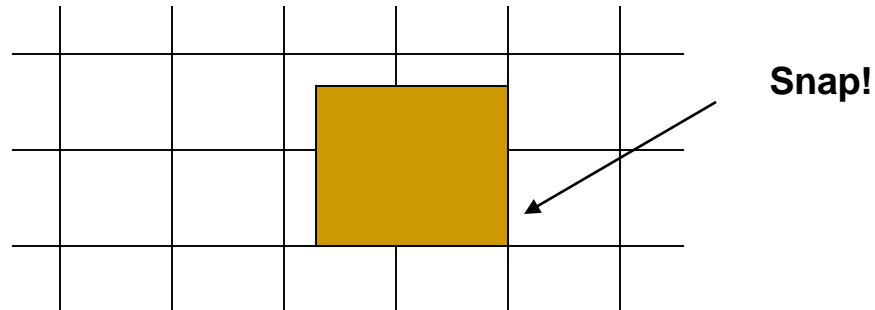
Before grouped



Grouped

Prefect Mouse Snapping action

- Snapping to drawing guide grid



- Snapping to existed shape

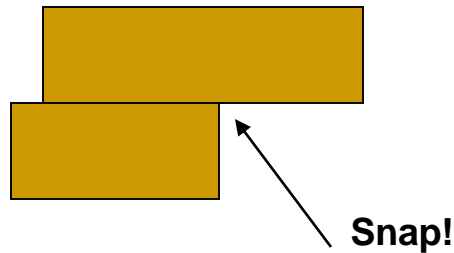


Image effects(1/2)

■ flip

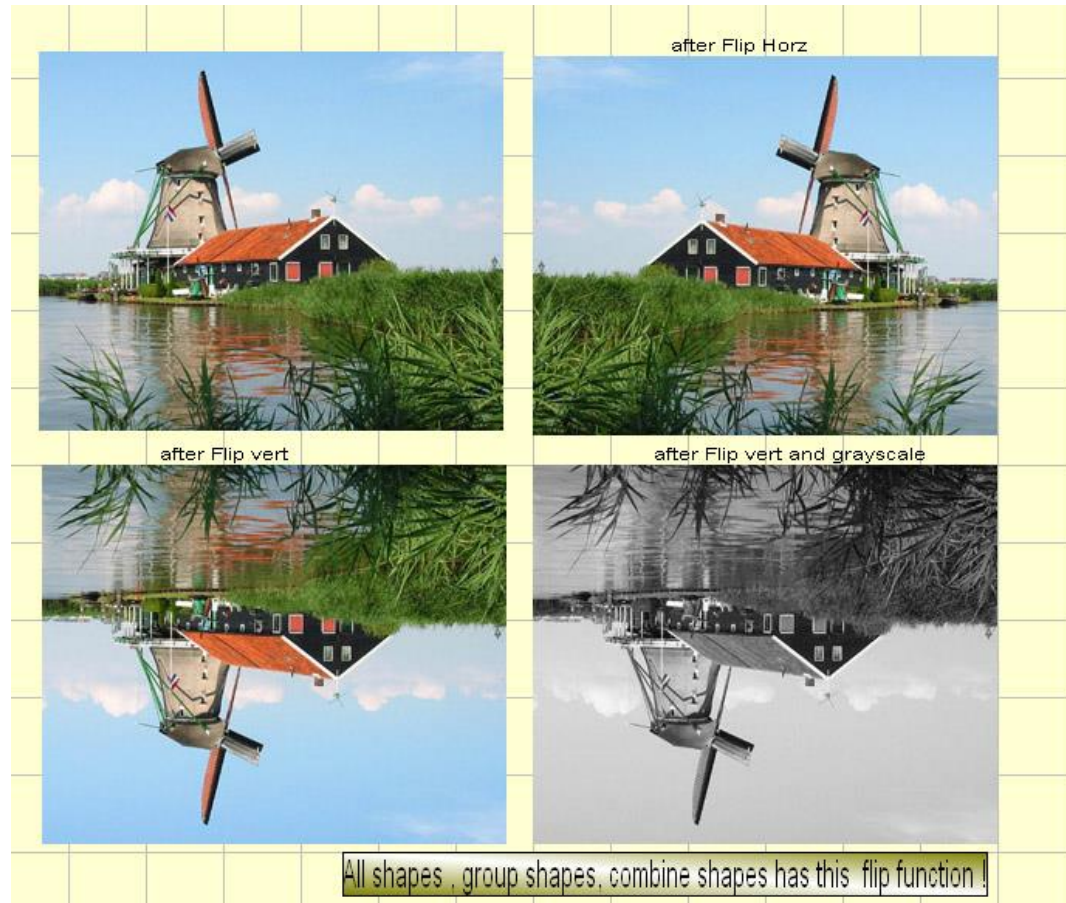
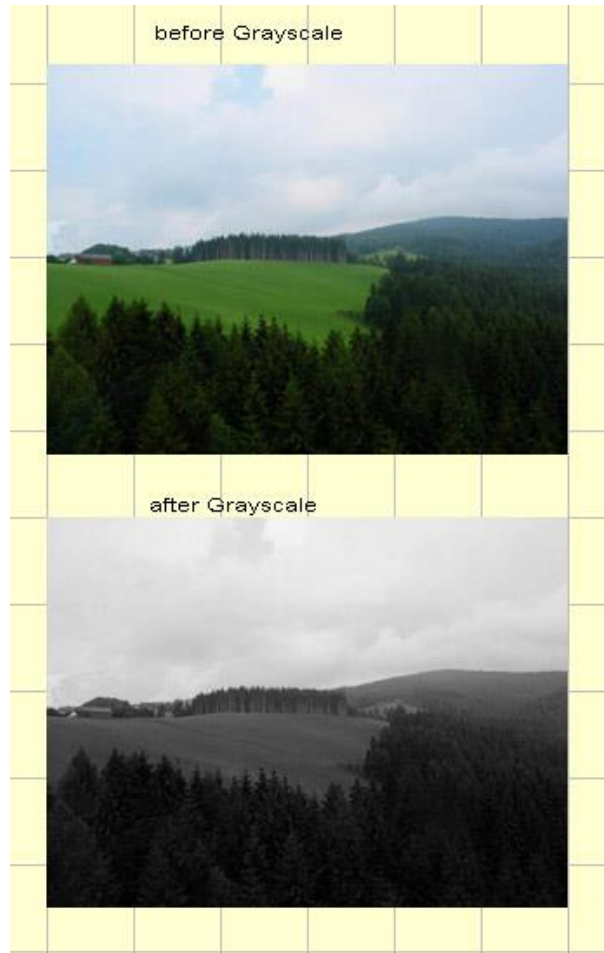


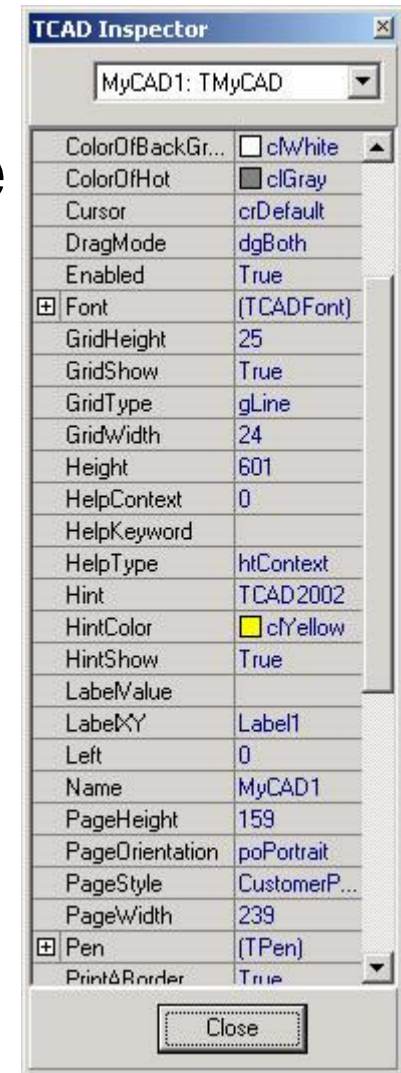
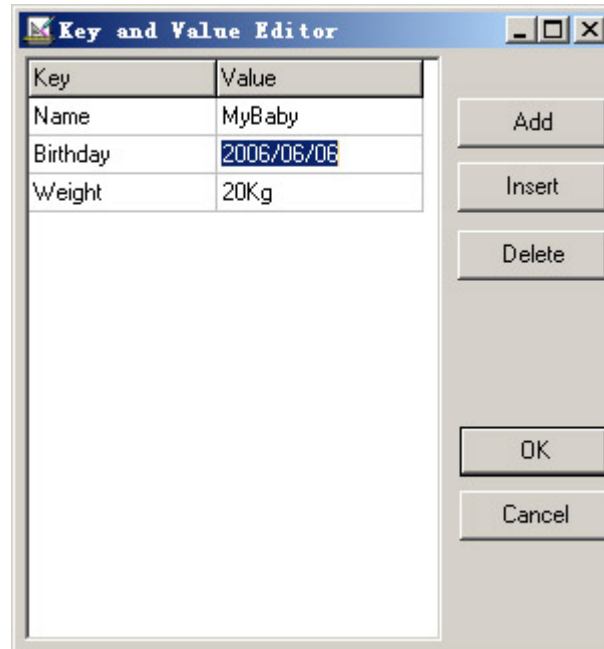
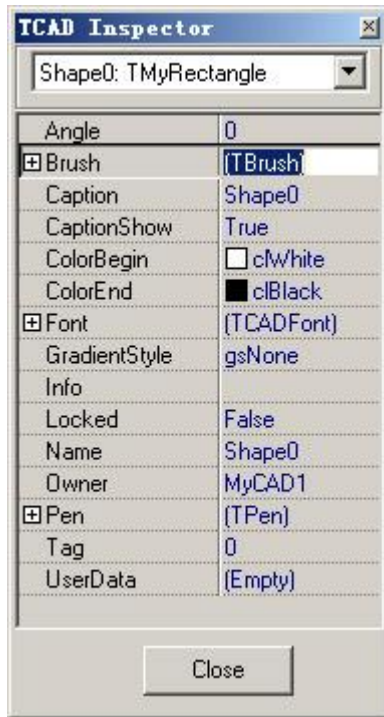
Image effects(2/2)

■ Grayscale



Power inspector(RTTI)

- Monitor every shape and change properties



Chapter 3 Basic property

- What is contained in TCAD package
 - Class inherited of TMyShape
 - Shape basic property
-

3.1 What is contained in TCAD package

■ Files list

<maindir>Codeidea Inc\TCAD for VCL

<dir>Component ----- TCAD package stored in different version

<dir>Editor ----- TCAD exe demo and drawing templates

<dir>LIBEditor ----- TCAD library creating tool and sample libraries

■ Components (class) list

TMyCAD

TMyShape (other shape classes belong it)

TRsRuler

TRsRulerCorner

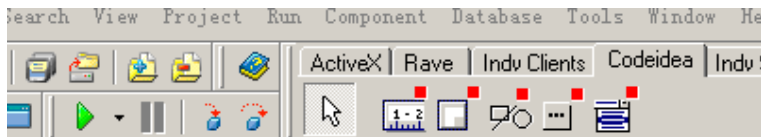
TComponentInspector

TComponentComboBox

TCADHotKey(after installed cadhotkey.pas)

■ Component panel

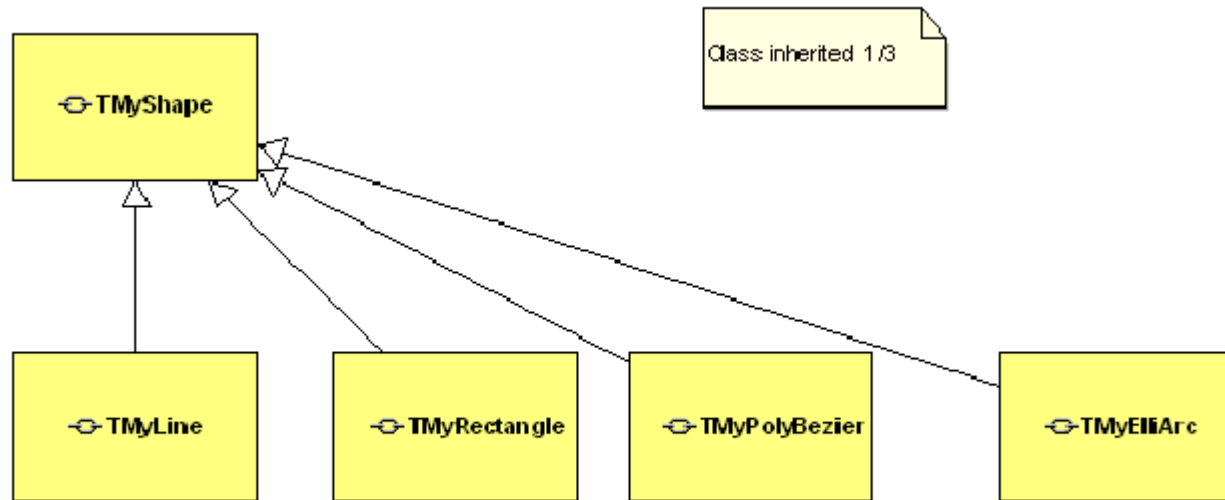
Delphi 5-7:



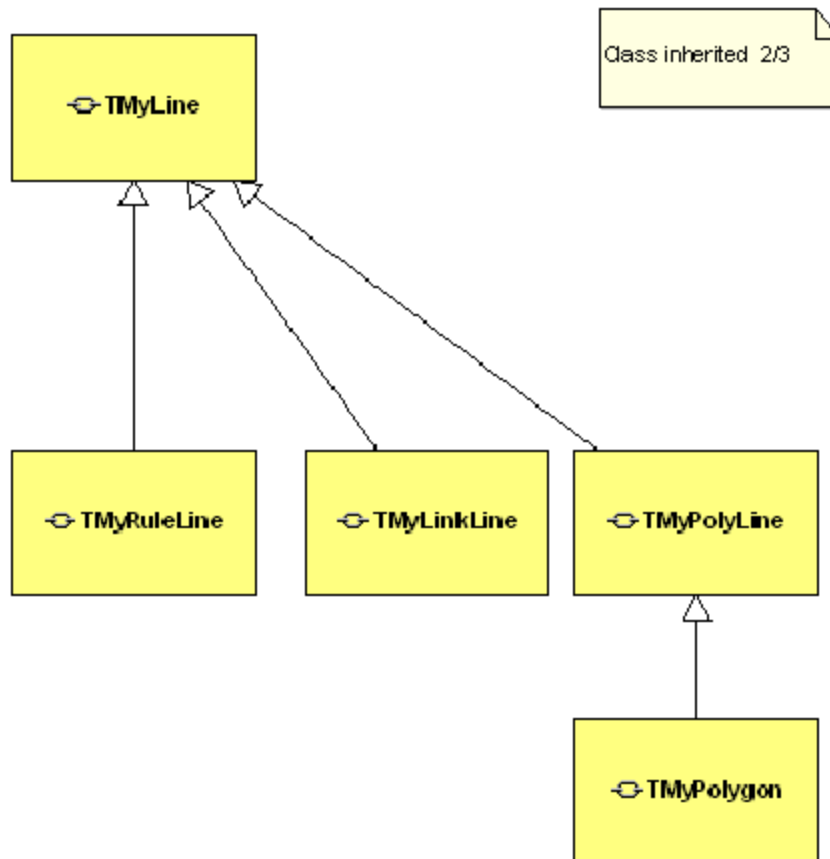
Delphi XE:



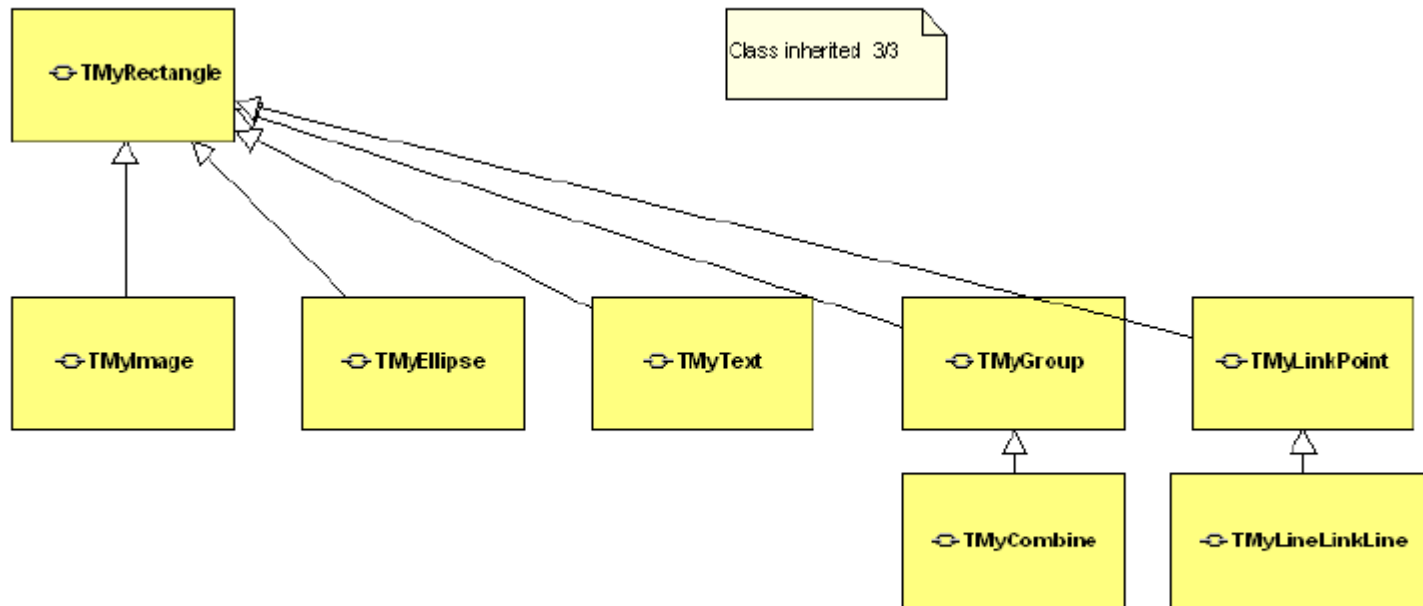
3.2 Class inherited 1/3



3.2 Class inherited 2/3



3.2 Class inherited 3/3



3.3 Shape basic property

- **AShape.ThePoints**

define:

```
ThePoints:TArrMyPoint;  
TArrMyPoint:Array of TMyPoint;  
TMyPoint = record  
x:single;  
y:single;  
end;
```

related method to access and change points:

```
GetPoint(i)  
GetPointsInZoom(i)  
SetPointx(f)  
SetPointy(f)  
SetPointXY(Pt);
```

Pen:TPen;

Set the pen of a TMyShape instance that you need;

Brush:TBrush;

Set the brush of TMyShape instance that you need;

Info:string;

Caption:string;

- **Muti-info:string;**

- **Demonstration for setting the property of a shape as test**

Chapter 4 Advance property

- ShapeNo

It is the order of MyShapes, the action delete, add, sendback, bringtofront, sendbackbystep, bringtofrontbystep will change it. it is maintained by TMyCAD and readonly for you, please don't change it by code!

- ShapeId

It is the shape's Id, Delete or add a shape, it is not changed, it is an auto-increment field. it is maintained by TMyCAD and readonly for you, please don't change it.

- ChildShapeNo

If the shape is a single shape, this field is empty; if it is a grouped or combined shape, this field will store the child shape no.

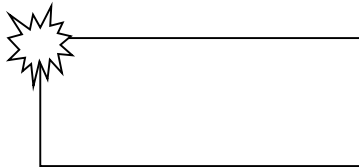
- UserData

UserData:TUserData;

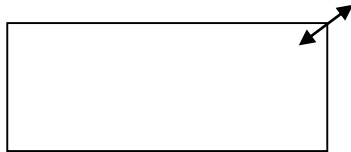
You can manage your own data at here, it is very useful. please read TUserData in help file.

Chapter 5 Mouse Drawing and Code Drawing

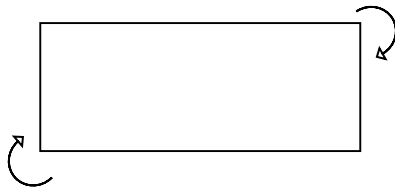
Mouse Actions (view the demo)



- Adding a new shape



- Resizing a (grouped) shape



- Rotating a (grouped) shape

Code Actions (view the demo)

- AddShapeByCode....
 - Move(AShape:TMyShape;Dx,Dy:integer);
 - Rotate (AShape:TMyShape;AAngle:double);
 - SizeShape (AShape:TMyShape;.....);
 - DeleteAllShapes...
 - DeleteShapeById.....
-

-
- View the demo :

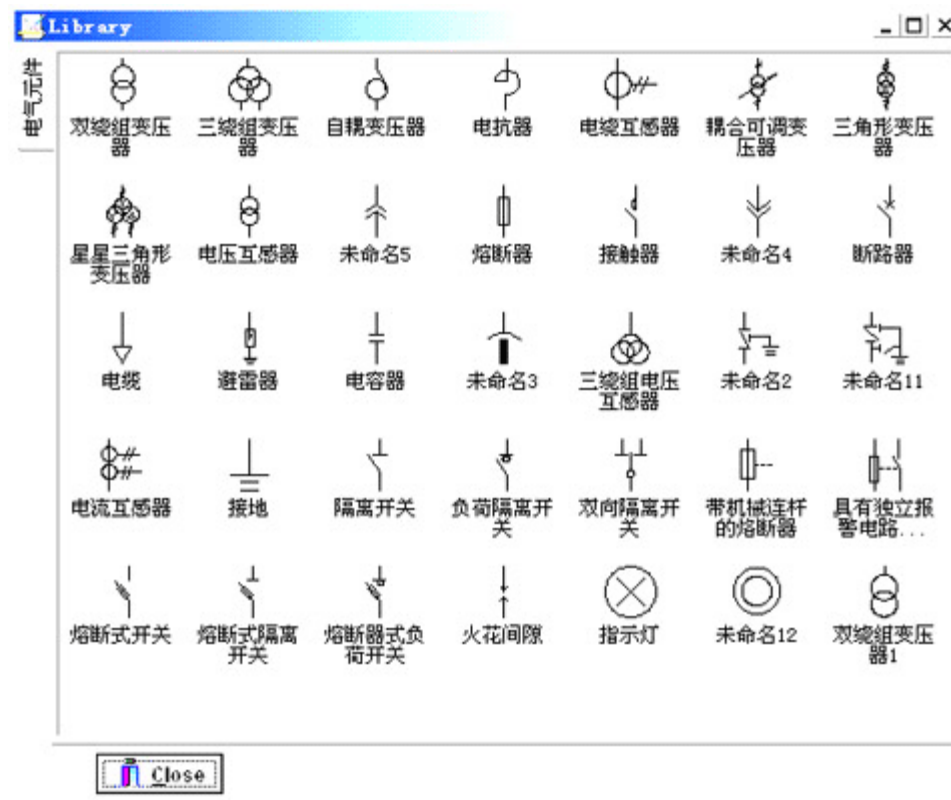
C:\Codeidea\TCADVCL\Developing\Demos\Delphi7\Basic

- Using code to CONTROL shape
-

Chapter 5 Library creating and using (day3)

- Why need we create library
- There are many shapes around the world, simple shapes like line, rectangle and circle , complex shapes like cup, desk, network switch, the complex shape is combined by basic shape.
- If you are electric designer which manage network devices, so you need to create a "electric devices" library, named electriclib.lib, like this, than you can access these shapes easy and fast, save your time.

Library sample:



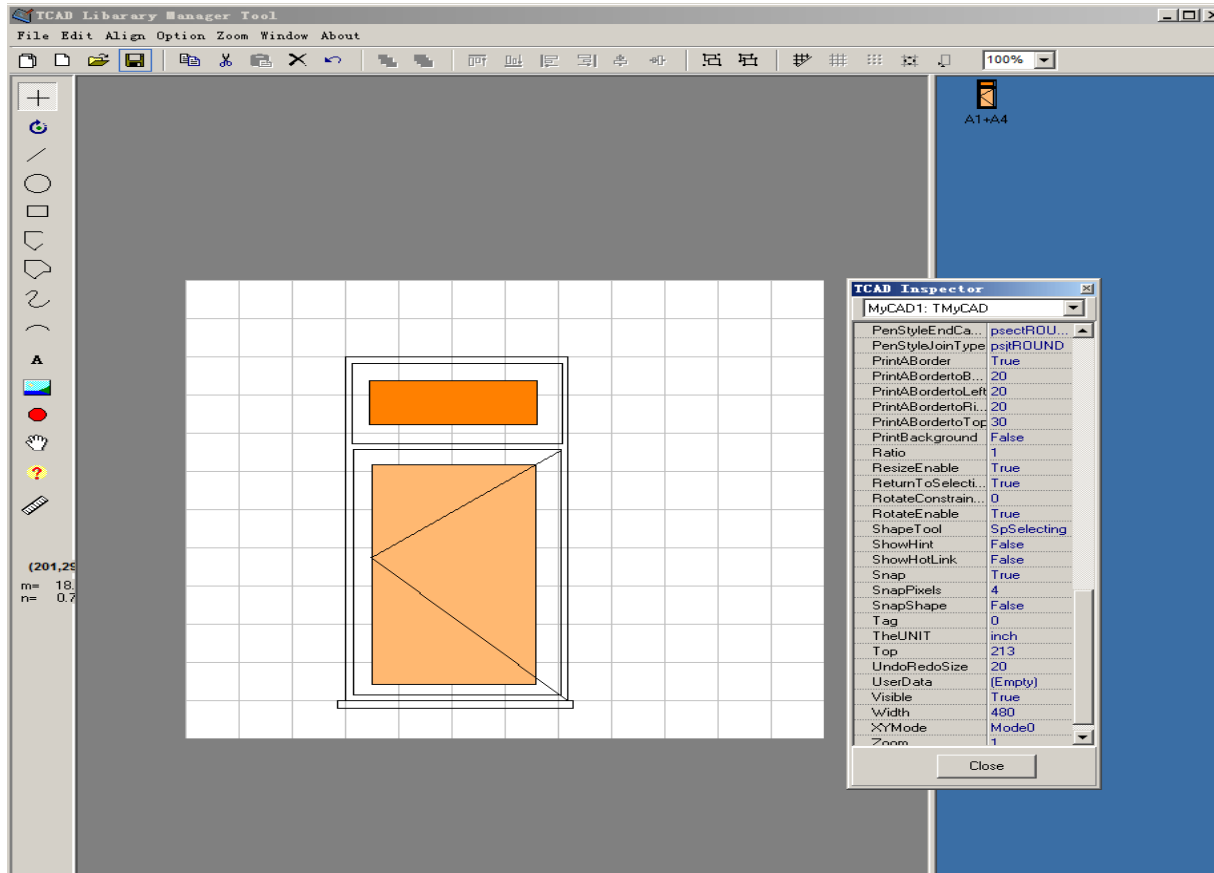
Library sample:



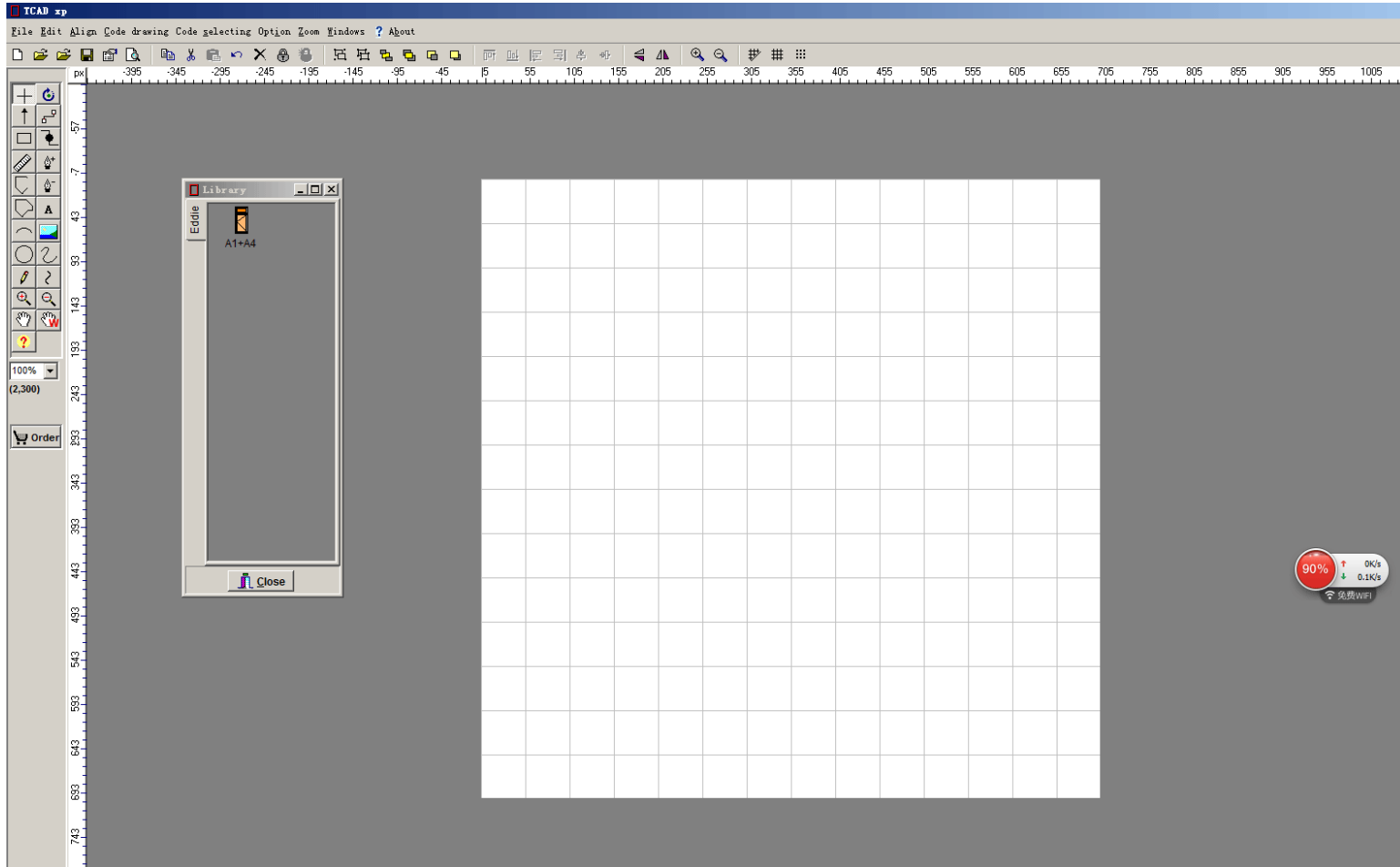
Library sample:



Use LIBEditor.exe to create a new library to fit your need

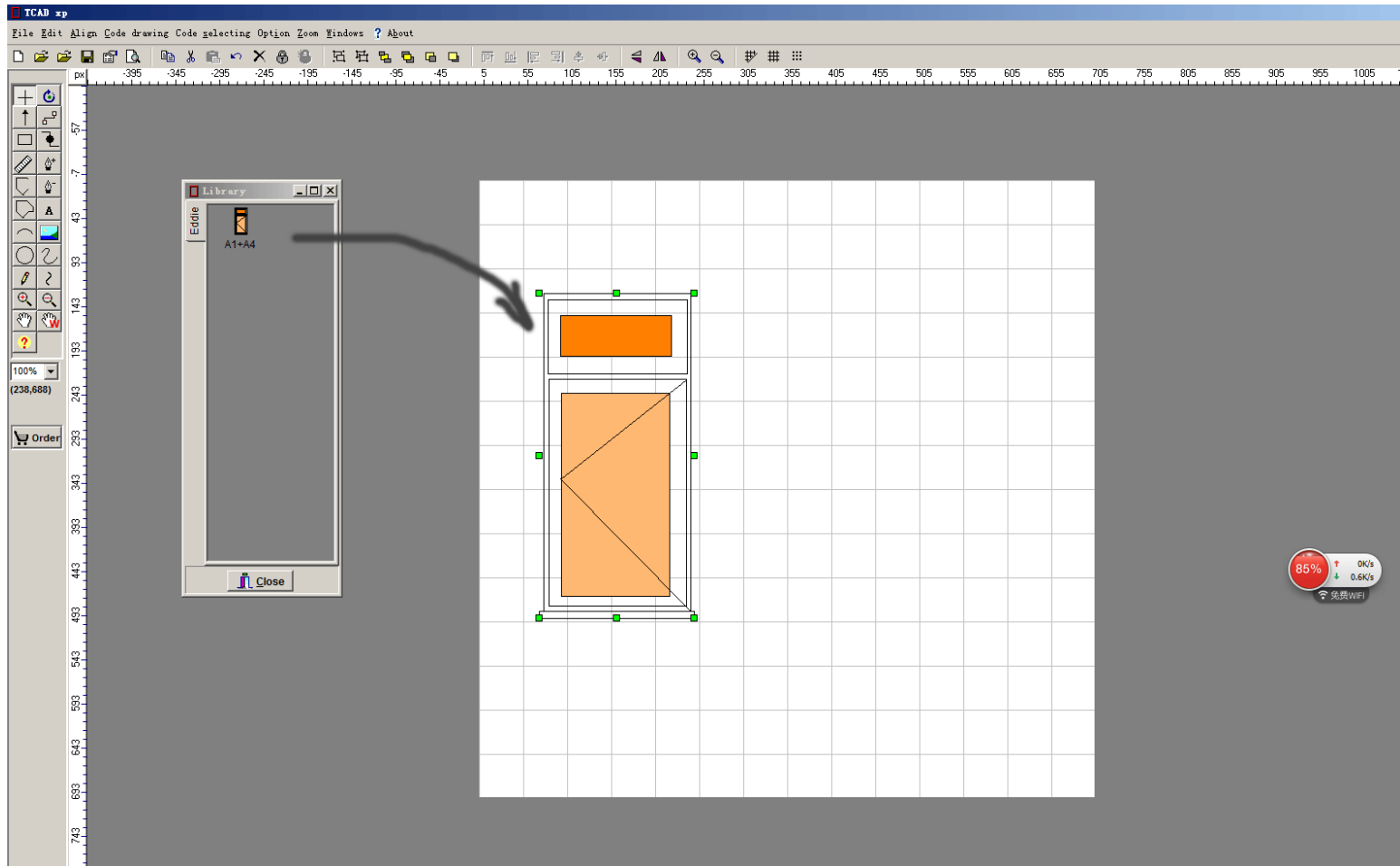


Open library in DesignallWinEN.exe

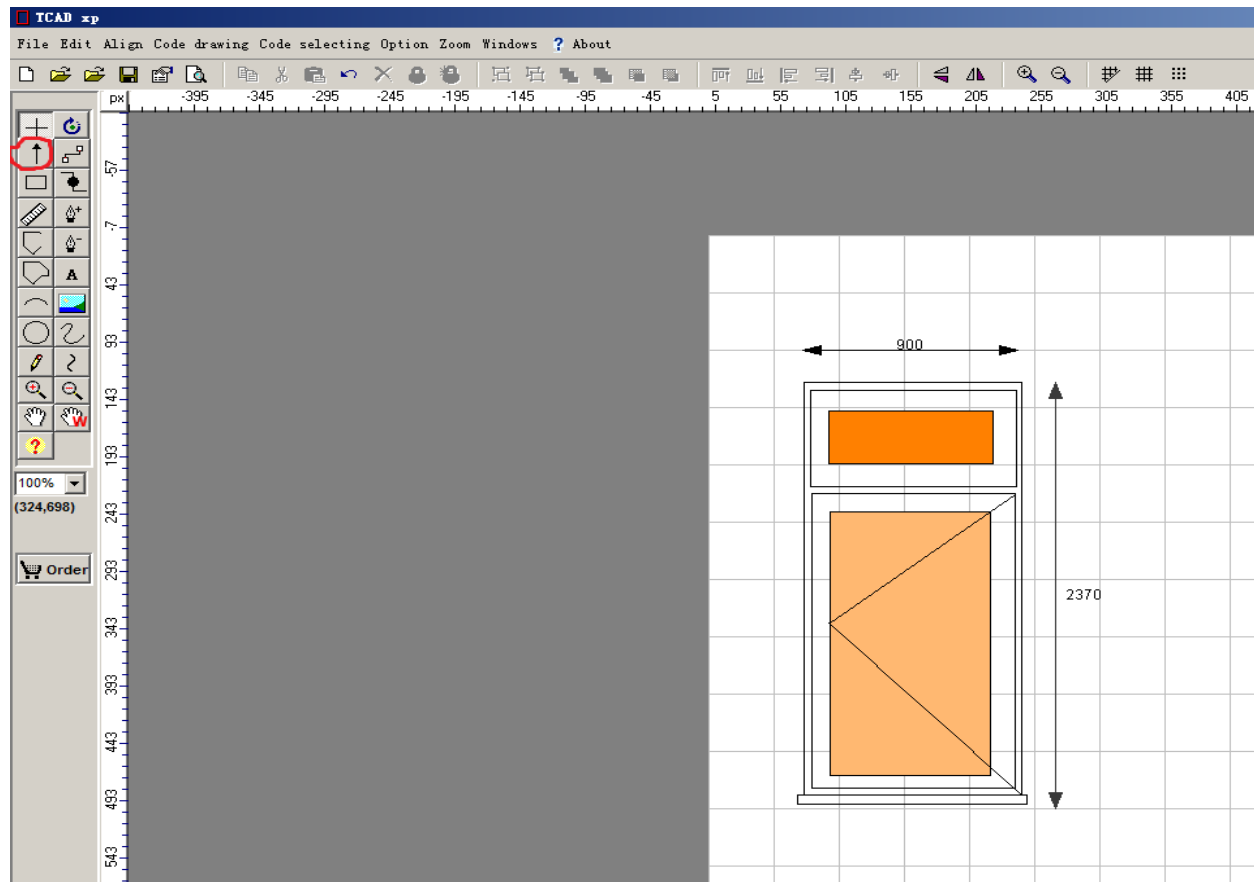


Using File-> open lib

Drag the combine shape to Canvas

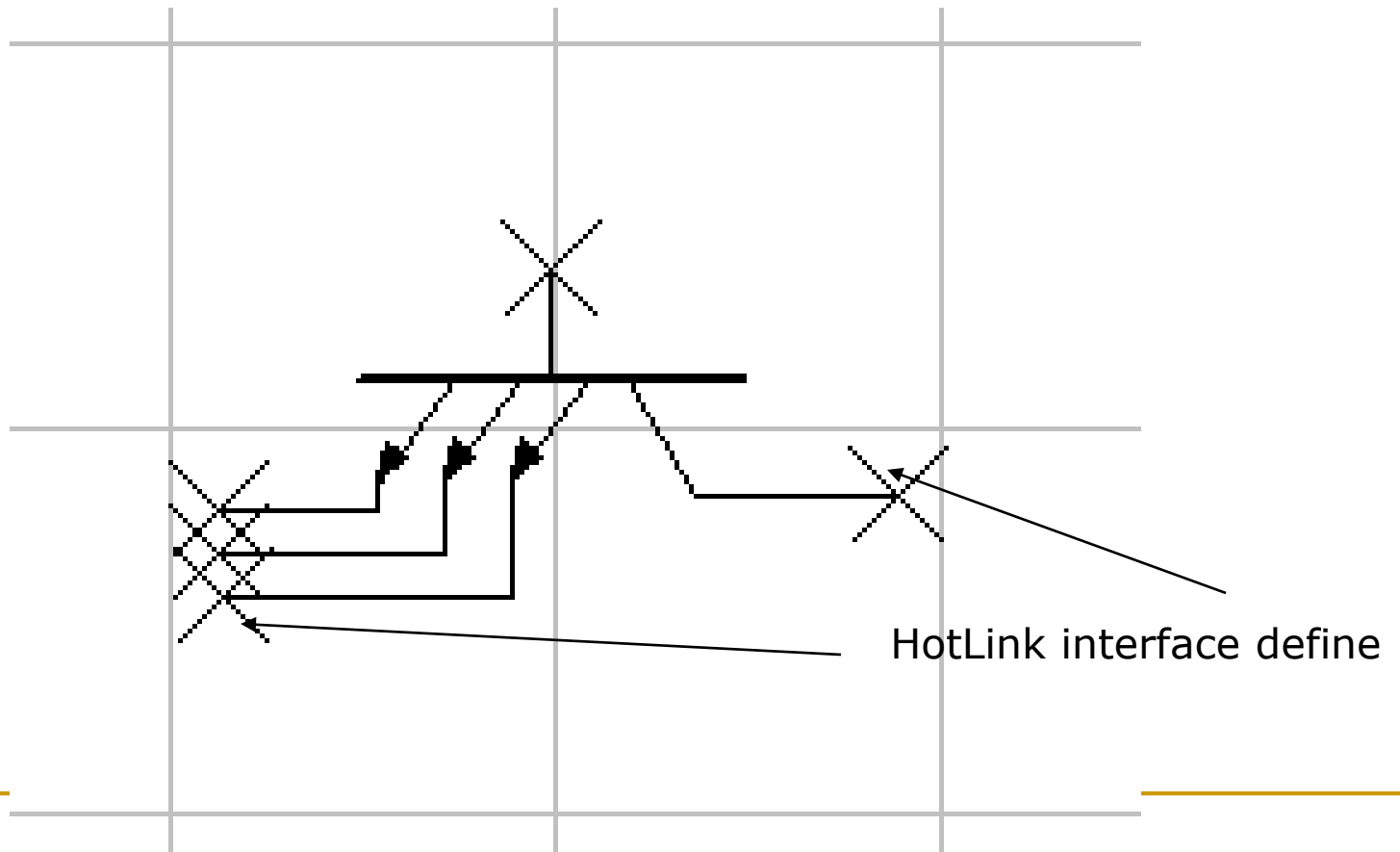


Add the TMyRuleLine Shape and add length value

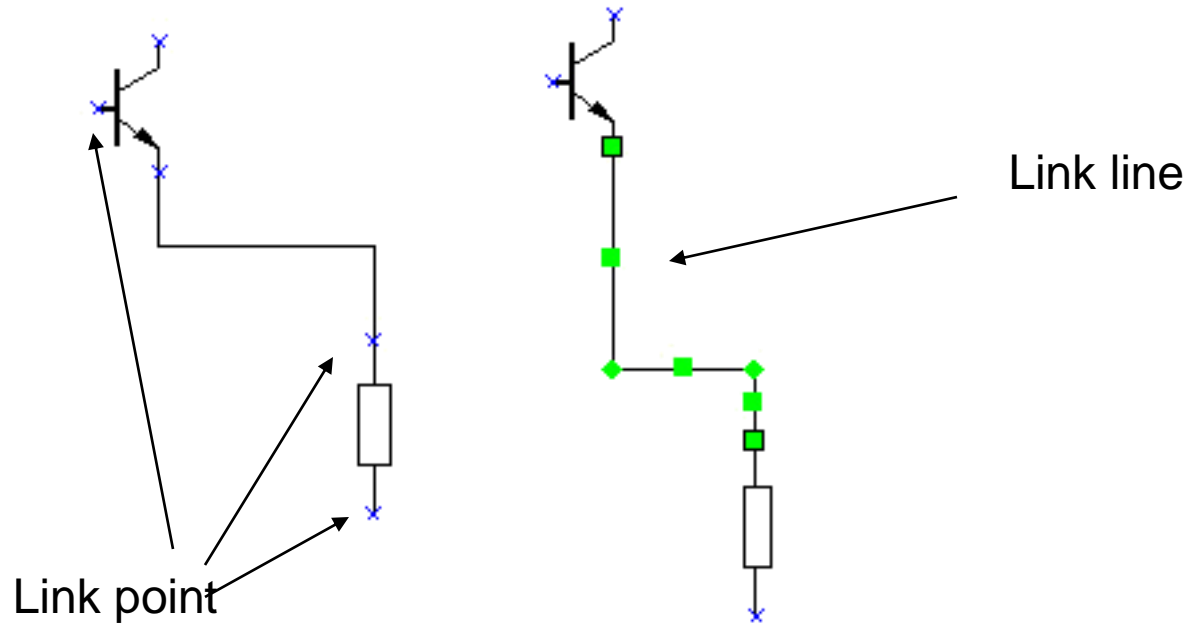


Creating User Define Shape with hot link

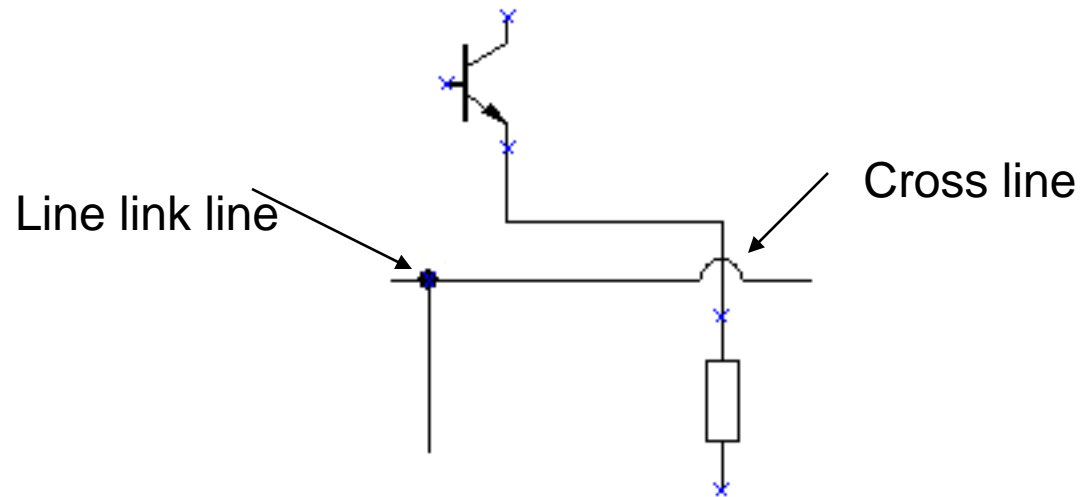
Not only you can draw basic shapes to form a complex shape, you can also add the **HotLink Interface for Dynamic linking** !



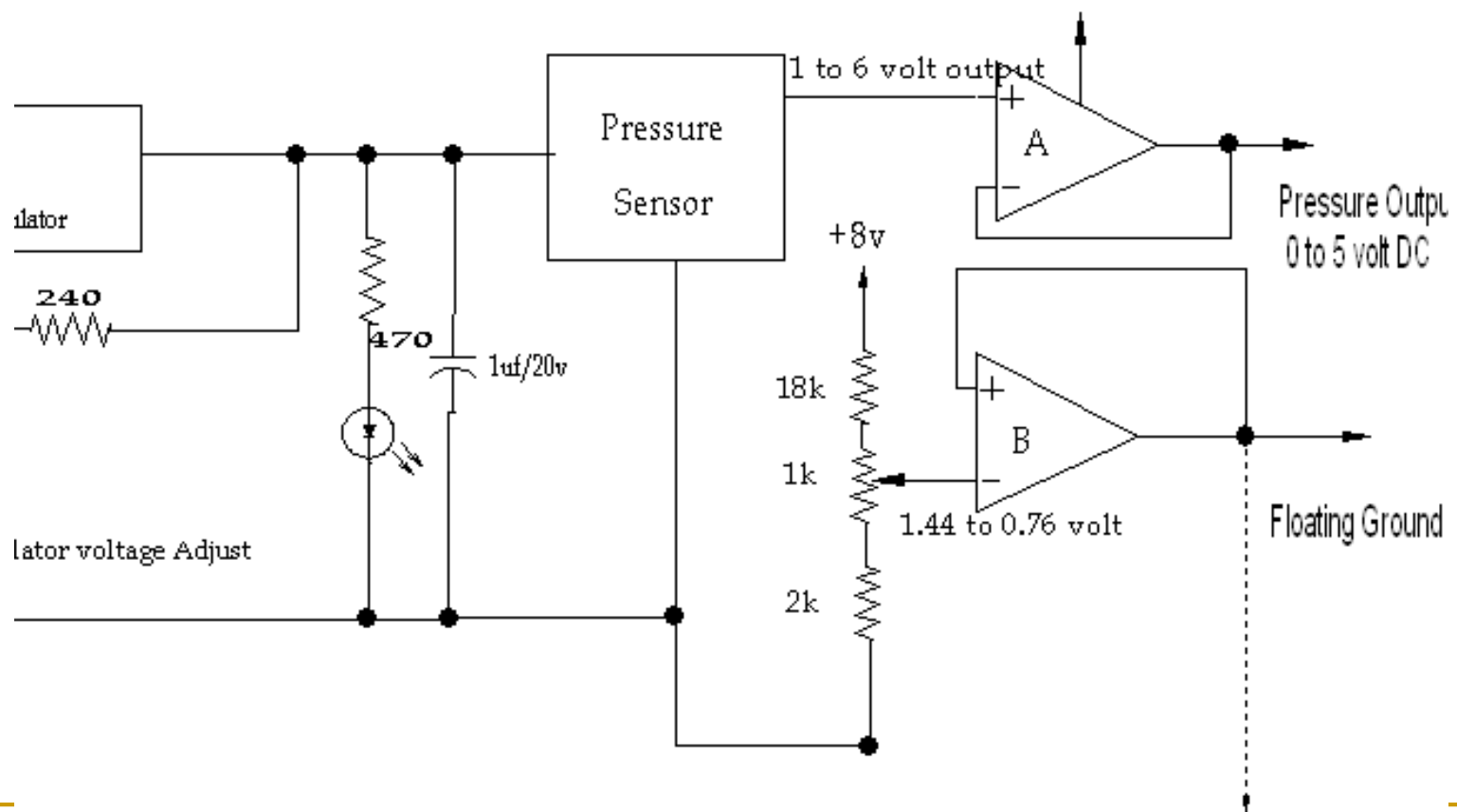
Using User Define Shape with hot link



LinkLine, LinkPoint, LineLinkLine, CrossLine



Create a Drawing with Library



Notice

Shape Linkpoint(black circle icon in the Designallwinen.exe)
cannot be insert into the combineshape,
only for the drawing

Shape LinelinkLine (red circle icon in the libeditor.exe)
cannot be insert into the drawing , only for Creating a new
combineshape

Chapter 6 Events - Mouse(day4)

OnMouseEnter

OnMouseLeave

OnMouseEnterShape

OnMouseLeaveShape

View the demo

C:\Codeidea\TCADVCL\Developing\Demos\Delphi7\Events

Chapter 6 Events - Layer(day4)

Layer Events

OnNewLayer

OnDeleteLayer

Shape Events

OnShapeSelected

OnShapeAdded

OnShapeMouseDown

OnShapeMouseResizing

OnShapeMouseRotating

OnShapeCodeDragging

OnShapeCodeRotating

OnShapeCodeResizing

Chapter 7 Layer Operation (day4)

- **Switch working layer**

CurrentLayerId:=x

- **Create a new layer**

NewLayer

Chapter 7 Layer Operation (day4)

- **Delete an existing Layer**

DeleteLayerByName

DeleteLayerByID

DeleteAllLayers

- **Show or hide a layer**

VisibleLayerByID InVisibleLayerByID

VisibleLayerByName InVisibleLayerByName

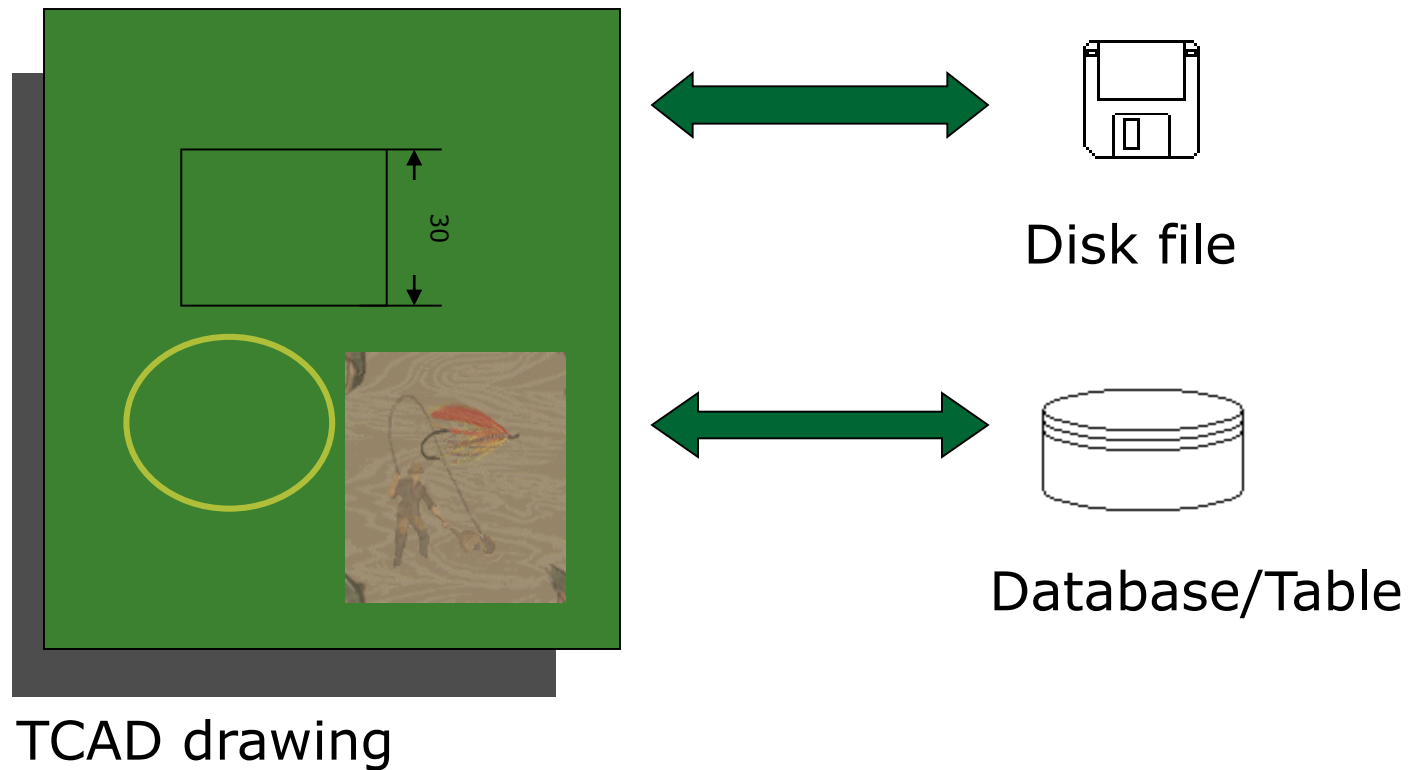
Chapter 7 Layer Operation (day4)

- **function** MergeLayers(LayerId1,LayerId2:integer): Boolean;

Description:

Merge Layer2 to Layer1 and remove the layer2, CurrentLayerId is Layer1.

Chapter 8 Save and Load the drawing (day5)



TCAD and DiskFile

- SaveToFile
- LoadFromFile

TCAD and Database

1. Save TCAD drawing to one binary field

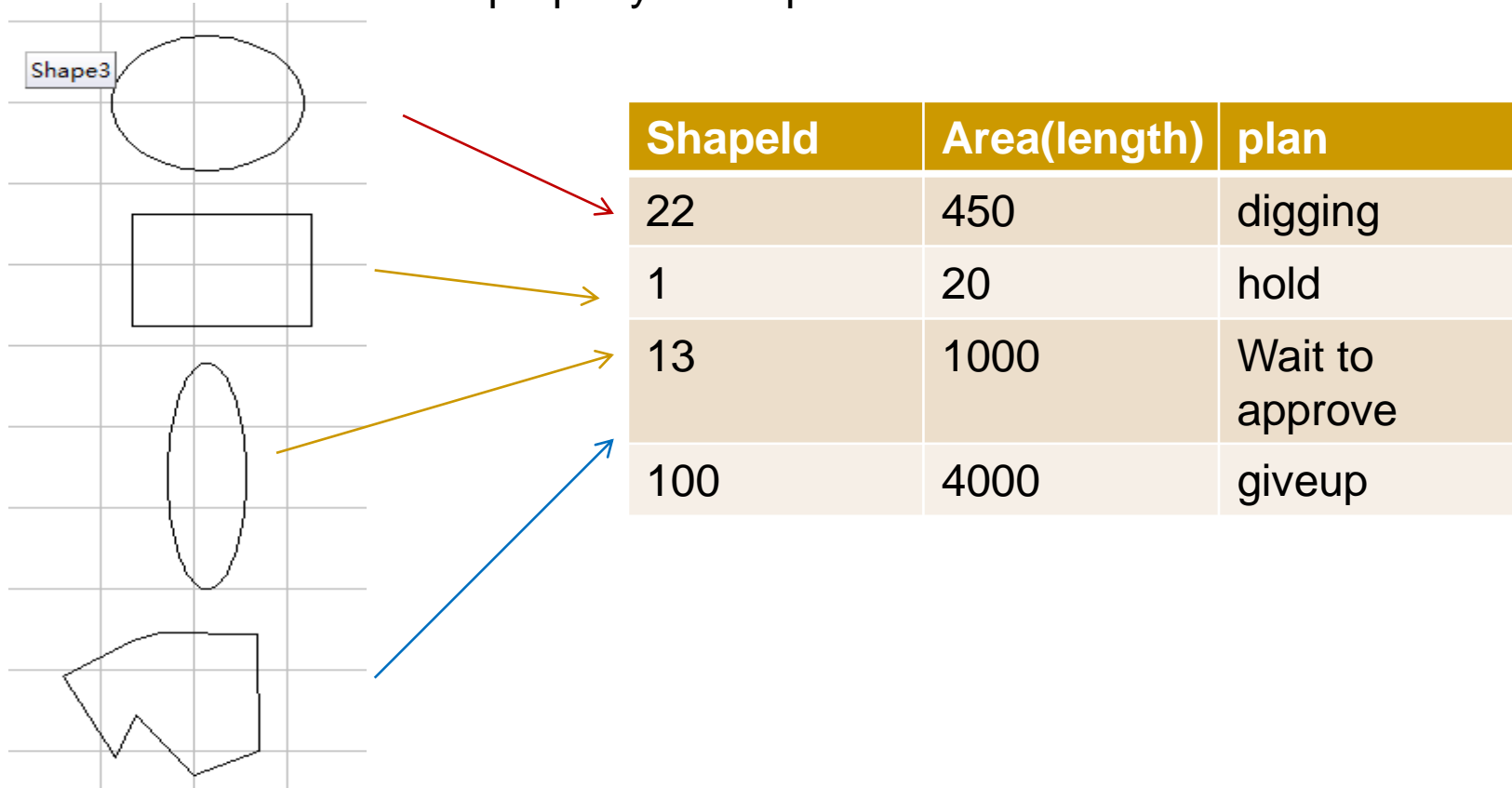
SaveToStream

LoadFromStream

```
procedure TMainForm.LoadDraw;
var
  ms:TMemoryStream;
begin
  ms:=TMemoryStream.Create;
  edtName.Text:=Table1.FieldByName('Name').AsString;
  edtLastUpdate.Text:=Table1.FieldByName('LastUpdate').AsString;
  Table1Draw.SaveToStream(ms);
  if ms.Size>0 then
    MyCAD1.LoadFromStream(ms);
  ms.Free;
end;
```

TCAD and Database

2.Create the row to store property of shapes



TCAD and Print

- procedure PrintPreview(ALayers: array OF Integer; ABitmap:TBitmap; ScaleforPreview:double = 1.0);
- Description:
- Preview the drawing on the Bitmap.
- Parameter
- ALayer: if you want print all layer, please use [], else [1,2,3], or you create array and set layerId that you want print
- ABitmap: that you draw on.
- ScaleforPreview:the scale.
- Example:
- Delphi:
- //print preview all shapes in 100% scale.
- MyCAD1.PrintPeviw ([],Image1.Picture.Bitmap,1.0);
- int p[1];
- p[0]=0;
- MyCAD1->PrintPreview(p,1,Form1->Image1->Picture->Bitmap,1);
- Form1->Show();
- }

TCAD and Print

- `Print(ALayers: array of Integer; UserScale: double = 1.0);`
 - **Description:**
 - Print to printer.
 - **Parameter**
 - *ALayer*: if you want print all layer, please use [], else [1,2,3], or you create array and set layerId that you want print
 - *UserScale*: the scale.
 - **Example:**
 - Delphi
 - *//print all shapes in 50% scale.*
 - `MyCAD1.Print ([],0.5);`
-

-
- Day 4 Ask questions
 - Day 5 For you application
-